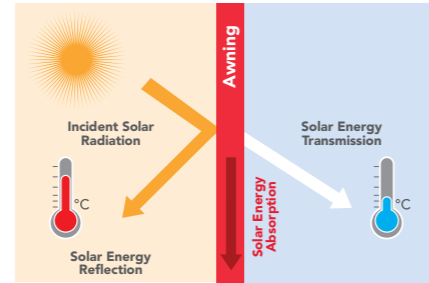


SUNWORKER: An ultra high-tech fabric

Absolute Heat Shield

SUNWORKER fabrics are fully in line with the drive towards sustainable development and energy savings. Thanks to its highly regular, perforated micro-structure, the fabric acts as a genuine heat filter. It repels up to 95% of the heat of the sun's rays, thus avoiding any greenhouse effect and preventing buildings from overheating in summer. In winter, the process is reversed, thus maintaining heat within the building, but also acting as a renewable solution letting the heat in.

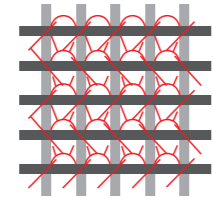


Optimal Visual Comfort

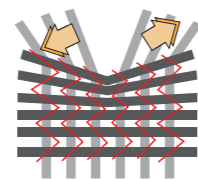
By choosing a SUNWORKER fabric, you can control the sun's glare while maintaining a clear view* towards the outside and still preserve your privacy... So you can see without being seen!
*except Sunworker Opaque and Cristal

Mechanical Strength

The "heart" of Sunworker is made up of a high-strength polyester core, while the distinctive Rachel Trameur-style weaving method used in its manufacturing gives it outstanding resistance to bad weather. This technique allows the yarns to move in relation to each other in order to spread, transmit and absorb mechanical energy in the event of tearing.



Behaviour under normal conditions



Behaviour under tearing

Durable Colours & Easy Maintenance

The Lowick System blocks the capillarity effect so the fabric's absorption of water is very limited. Sunworker fabrics are therefore more durable and stand up to even the most extreme weather conditions. The pigments used allow the colours to keep all their brilliance under the effects of the sun's rays.



Maximum Safety

All SUNWORKER fabric is guaranteed fire-retardant. As a result, it suits all types of projects: restaurants, hotels, shops, housing, commercial and public buildings, etc.



* See warranty terms & conditions at www.dickson-constant.com



SUNWORKER

Colour N°	THERMAL AND LIGHT PERFORMANCES according to EN 410, EN 14500, EN 14501 and EN 13363-1										Colour equivalents	
	gtot* ext.	gtot* int.	Te	pe	Oe	Tv	Pv	Ov	Tuv	NCS	RAL	
M525	0,21	0,41	0,29	0,49	0,22	0,25	0,55	0,20	0,06	S1020-G20Y	6019	
M567	0,13	0,54	0,08	0,09	0,83	0,07	0,07	0,86	0,06	S6030-B50G	6004	
M238	0,17	0,45	0,20	0,38	0,42	0,08	0,23	0,69	0,06	+/- S2050-R80B	+/- 5024	
M228	0,14	0,50	0,13	0,21	0,66	0,06	0,06	0,88	0,06	S6020-R60B	5013	
M711	0,17	0,41	0,21	0,50	0,29	0,18	0,55	0,27	0,06	1005-Y20R	+/- 1015	
M713	0,18	0,45	0,21	0,38	0,41	0,18	0,40	0,42	0,06	S2020-Y30R	1001	
M709	0,17	0,39	0,22	0,56	0,22	0,16	0,60	0,24	0,06	S030-Y20R	+/- 1017	
M309	0,23	0,43	0,31	0,45	0,24	0,28	0,52	0,20	0,06	S0580-Y10R	1018	
M005	0,16	0,36	0,23	0,66	0,11	0,21	0,75	0,04	0,06	S052-Y	+/- 9010	
M710	0,18	0,39	0,25	0,57	0,18	0,23	0,66	0,11	0,06	S1005-Y	+/- 1013	
M712	0,16	0,42	0,20	0,47	0,33	0,17	0,53	0,30	0,06	S2010-Y	+/- 7032	
M654	0,13	0,42	0,14	0,47	0,39	0,11	0,53	0,36	0,06	S1002-G	+/- 7047	
M653	0,13	0,46	0,12	0,35	0,53	0,10	0,38	0,52	0,06	S3005-R50B	7045	
M652	0,12	0,49	0,08	0,24	0,68	0,07	0,26	0,67	0,06	S4502-B	+/- 7046	
M927	0,22	0,47	0,27	0,31	0,42	0,09	0,11	0,80	0,06	S2060-R	+/- 3027	
M838	0,13	0,53	0,09	0,13	0,78	0,06	0,09	0,85	0,06	S5030-R	3004	
M392	0,12	0,55	0,06	0,07	0,87	0,06	0,07	0,87	0,06	S7502-B	+/- 7016	
M393	0,12	0,54	0,07	0,08	0,85	0,06	0,08	0,86	0,06	S6502-N	8019	
M391	0,12	0,55	0,06	0,05	0,89	0,06	0,05	0,89	0,06	S8500-N	7021	
M654**	0,09	0,46	0,05	0,35	0,60	0,06	0,36	0,58	0,06	S3502-B	9022	
M652**	0,09	0,46	0,05	0,35	0,60	0,06	0,36	0,58	0,06	S3502-B	9022	
M711	0,14	0,41	0,17	0,50	0,33	0,14	0,54	0,32	0,02	1005-Y20R	+/- 1015	
M709	0,16	0,40	0,22	0,54	0,24	0,15	0,56	0,29	0,02	S030-Y20R	+/- 1017	
M005	0,17	0,37	0,24	0,62	0,14	0,21	0,71	0,08	0,02	S052-Y	+/- 9010	
M710	0,17	0,39	0,23	0,57	0,20	0,21	0,65	0,14	0,02	S1005-Y	+/- 1013	
M712	0,13	0,42	0,14	0,47	0,39	0,11	0,52	0,37	0,02	S2010-Y	+/- 7032	
M654	0,13	0,43	0,15	0,44	0,41	0,12	0,48	0,40	0,02	S1002-G	+/- 7047	
M652	0,10	0,49	0,07	0,25	0,68	0,06	0,28	0,66	0,02	S4502-B	+/- 7046	
M392	0,12	0,55	0,05	0,07	0,88	0,05	0,07	0,88	0,02	S7502-B	+/- 7016	
M711	0,04	0,39	0,00	0,56	0,44	0,00	0,61	0,39	0,00			
M709	0,03	0,36	0,00	0,62	0,38	0,00	0,67	0,33	0,00			
M005	0,03	0,34	0,00	0,70	0,30	0,00	0,79	0,21	0,00			
M710	0,03	0,35	0,00	0,66	0,34	0,00	0,74	0,26	0,00			
M712	0,04	0,40	0,00	0,52	0,48	0,00	0,57	0,43	0,00			
M654	0,04	0,40	0,00	0,50	0,50	0,00	0,56	0,44	0,00			
M652	0,07	0,49	0,00	0,25	0,75	0,00	0,28	0,72	0,00			
M005	0,25	0,39	0,36	0,55	0,09	0,37	0,60	0,03	0,21	S052-Y	+/- 9010	
M652	0,18	0,51	0,19	0,20	0,61	0,18	0,23	0,59	0,17	S4502-B	+/- 7046	
M654	0,21	0,45	0,27	0,37	0,36	0,25	0,41	0,33	0,21	S1002-G	+/- 7047	
M711	0,24	0,45	0,35	0,40	0,25	0,34	0,40	0,26	0,21	1005-Y20R	+/- 1015	

Te : Solar Transmission
pe : Solar Reflection
Oe : Solar Absorption
Tv : Visual Transmission
Pv : Visual Reflection
Ov : Visual Absorption
Tuv : UV Transmission

* gtot: solar factor of the combination of fabric + reference glazing C (double glazing 4 + 16 + 4 with a low emission on side 3, Argon filling ; U=1,2 W/m2K ; g=0,59)
** Values for the metal face exposed towards the exterior

DICKSON CONSTANT SARL - capital 112.640.000 euros - 381 347 970 R.C.S. Lille Métropole - Crédits photos - Atmosphère Photo - Edition Octobre 2013



TECHNICAL TEXTILES
for solar protection



10 rue des Châteaux
BP 109 - Z.I. La Pilaterie
59443 Wasquehal Cedex - France
www.dickson-constant.com
Tél. +33 (0)3 20 45 59 59
Fax +33 (0)3 20 45 59 00

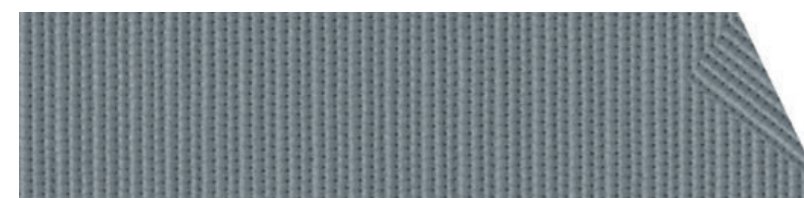
Performance fabrics for
solar protection
outdoor furniture
indoor furniture
marine furnishing
flooring



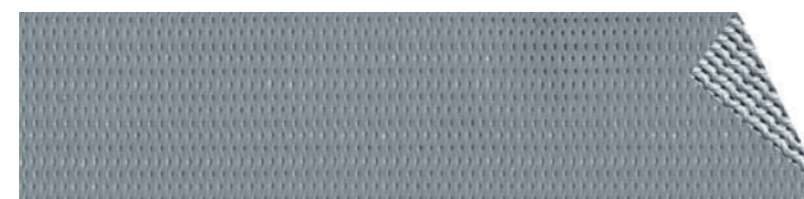


Marguerite Yourcenar library - Paris

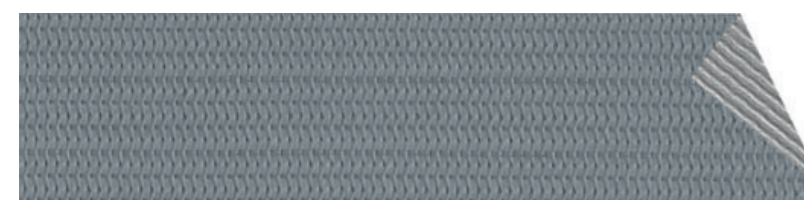
SUNWORKER: Fabric for all types of needs



SUNWORKER
Ordering code:
SWK + colour ref + width



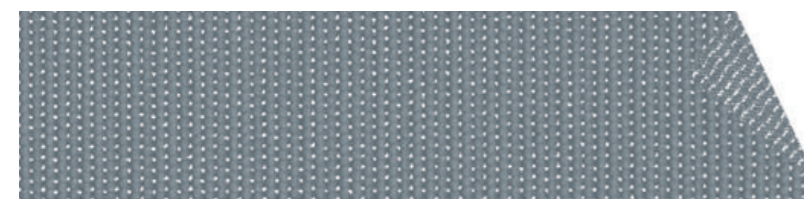
SUNWORKER METAL
Ordering code:
SWM + colour ref + width



SUNWORKER OPAQUE
For a total darkness
Ordering code: SWO + colour ref



SUNWORKER CRISTAL
A translucent fabric with maximum
waterproof protection
Ordering code: SWC + colour ref



SUNWORKER Open
For a brightness and an optimal visibility
Ordering code: SWN + colour ref

SUNWORKER: For all types of uses

	Vertical roll-down awnings	Folding-arm awnings	Window and veranda awnings	Projection awnings	Shade sails & tensile structures	Pergolas	Vertical strips	Kiosks
SUNWORKER and SUNWORKER Metal	✓	✓	✓	✓	✓	✓	✓	
SUNWORKER Opaque	✓		✓	✓			✓	
SUNWORKER Cristal		✓	✓	✓	✓	✓		✓
SUNWORKER Open		✓	✓	✓	✓	✓		✓

Technical Features

Conform to the RT 2012 requirements

	Weight NF EN ISO 2286-1	Fire Resistance M1/M2 (NF 92503) B1 (DIN 4102) C1 (UNI 9176) Class 1 (UNE-EN 13773:2003) B<240 (Euroclass EN 13501-1)	Openness	Thickness NF EN ISO 2286-3	Tearing Strength In daN/5cm DIN 53363	Tensile Strength In daN/5cm NF EN ISO 13934-1	Width / Roll length
SUNWORKER	320g/m²	M1 B1 C1 Class 1	6%	0,42mm	Warp 43 – Weft 22	Warp 220 – Weft 150	150cm/60m 300cm/30m
SUNWORKER Metal		M1 B1 Class 1	5%				
SUNWORKER Opaque	510g/m²	M1 B1	0%	0,49mm	Warp 69 – Weft 40	Warp 245 – Weft 160	145cm/30m
SUNWORKER Cristal	440g/m²	M2 B1 C1	4%	0,48mm	Warp 69 – Weft 30	Warp 235 – Weft 155	296cm/25m
SUNWORKER Open	360g/m²	M2 B1	15%	0,55 mm	Warp 50 – Weft 30	Warp 260 – Weft 180	305cm/30m

Guarantee 5 years
Temperature for use
-30°C to +70°C / -22°F to 158°F
Cleaning soapy water

SUNWORKER: Brilliant colours

To enable you to fully express your creativity, all Sunworker fabrics can be printed on

 SWK M525 Mint	 SWK M567 Green	 SWK M238 Blue	 SWK M228 Marine
 SWK M711 Champagne	 SWK M713 Sand	 SWK M709 Corn	 SWK M309 Yellow
 SWK M927 Red	 SWK M005 White	 SWK M710 Creme	 SWK M712 Beige
 SWK M838 Burgundy	 SWK M654 Grey	 SWK M653 Iron	 SWK M652 Silver
	 SWK M392 Charcoal	 SWK M393 Bronze	 SWK M391 Black

- Colours also available in Sunworker Metal (SWM)
- Colours also available in Sunworker Opaque (SWO)
- Colours also available in Sunworker Cristal (SWC)
- Colours also available in Sunworker Open (SWN)

